



Paul Morphy's Checkmates: 28 examples from his games



edited by Bill Harvey

Here's a collection of 28 mate puzzles taken from the games of Paul Morphy. Each diagram invites the reader to discover the solution. The disk color on the diagram indicates whose move it is. Solutions are provided at the end of the pamphlet. Bill Harvey is the webmaster of the chess puzzle site wtharvey.com.

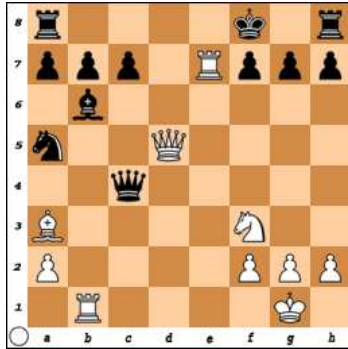
wtharvey.com

10,000 chess puzzles
from historic and modern
games

8/18/2015

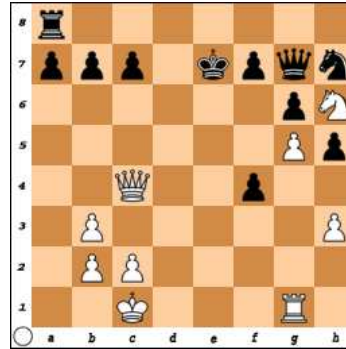
chesstouring.com

1) Paul Morphy
vs A Morphy
New Orleans, 1849



White mates in 2.

4) Paul Morphy
vs T Lichtenhein
New York, 1857



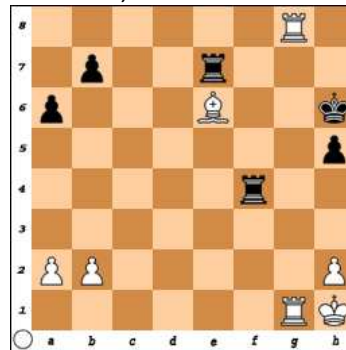
White mates in 4.

2) Paul Morphy vs
Ernest Morphy
New Orleans, 1850



White mates in 3.

5) Paul Morphy vs
Louis Paulsen
New York, 1857



White mates in 4.

3) Paul Morphy
vs T Lichtenhein
New York, 1857



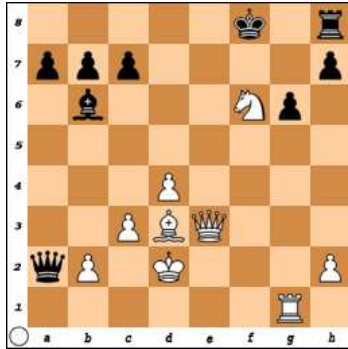
White mates in 4.

6) Paul Morphy
vs Carr
Birmingham, 1858



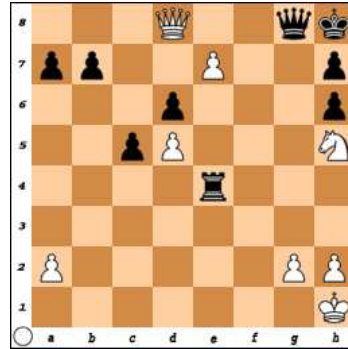
White mates in 4.

7) Paul Morphy
vs H Rhodes
Birmingham, 1858



White mates in 4.

10) Paul Morphy
vs Amateur
New Orleans, 1858



White mates in 5.

8) Paul Morphy
vs J Kipping
Birmingham, 1858



White mates in 4.

11) Paul Morphy
vs Amateur
New Orleans, 1858



White mates in 3.

9) Paul Morphy vs
Thomas Barnes
London, 1858



White mates in 4.

12) Paul Morphy
vs Amateur
New Orleans, 1858



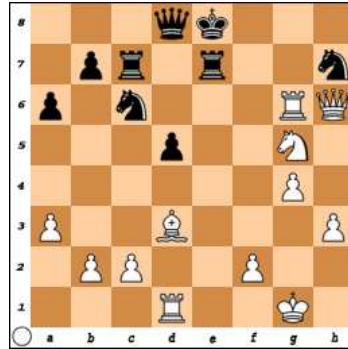
White mates in 3.

13) Paul Morphy
vs Forde
New Orleans, 1858



White mates in 4.

16) Paul Morphy
vs Chamouillet
Versailles, 1858



White mates in 4.

14) Paul Morphy vs
Jacques Baucher
Paris, 1858



White mates in 3.

17) Paul Morphy
vs Samuel Boden
London, 1859



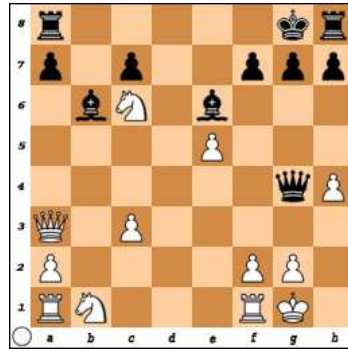
White mates in 4.

15) Paul Morphy vs
Duke Karl & Count Isouard
Paris, 1858



White mates in 2.

18) Paul Morphy
vs Thomas Brian
New York, 1859



White mates in 4.

19) Paul Morphy
vs Amateur
Paris, 1859



White mates in 4.

22) Paul Morphy
vs Jules De Riviere
Paris, 1863



White mates in 3.

20) Paul Morphy
vs William Lewis
Philadelphia, 1859



White mates in 3.

23) Paul Morphy
vs Domingues
Habana, 1864



White mates in 3.

21) Paul Morphy
vs B Smyth
Philadelphia, 1859



White mates in 4.

24) Paul Morphy vs
Capdevielle, 1864



White mates in 3.

25) Louis Paulsen
vs Paul Morphy
New York, 1857



Black mates in 5

25) 1...Rxc2+ 2.Kxc2 Qh3+ if 3.Kf2 Qh2+ or if 3.Kg1 Rg8+

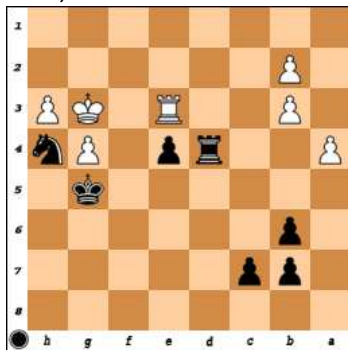
26) Adolf Anderssen
vs Paul Morphy
Paris, 1858



Black mates in 4

26) 1...Rc1+ if 2.Kh2 Qxf4+

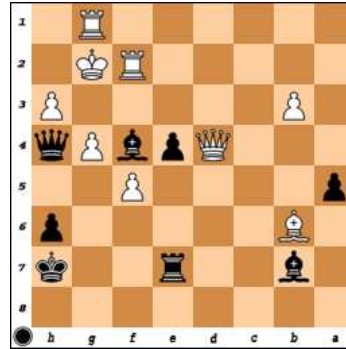
27) P Journoud
vs Paul Morphy
Paris, 1858



Black mates in 3

27) 1...Rd2

28) O Mongredien
vs Paul Morphy
Paris, 1859



Black mates in 3

28) 1...e3+ if 2.Rf3 Bxf3+

Solutions

- 1) 1.Rxf7+
- 2) 1.Rxd7 if 1...Nf5 2.Rxd8+
- 3) 1.Qb7+ Ka5 2.Bd2+ Qxd2 3.Nc4+ Ka4 4.b3#
- 4) 1.Qxc7+ if 1...Kf8 2.Qd6+ or if 1...Ke6 2.Re1+ Kd5 3.c4+
- 5) 1.R8g6+ Kh7 2.Bg8+
- 6) 1.Rh5+ Kf4 2.Kf2 Rg8 3.g3+
- 7) 1.Qe8+ Kg7 2.Nh5+ Kh6 3.Qe3+
- 8) 1.Rd5+ Kg4 2.Re4+ Kg3 3.Rd3+
- 9) 1.Qf3+ Kb8 2.Qf8+
- 10) 1.e8/Q Re1+ 2.Qxe1 Qxd8 3.Qc3+
- 11) 1.Rb5+ Ka4 2.Qc2+
- 12) 1.Qe7+ Kg8 2.Qf8+
- 13) 1.g5+ Kh5 2.Bf3+ Bg4 3.Qg3
- 14) 1.Qf7+

- 15) 1.Qb8+
- 16) 1.Rg8+ Nf8 2.Rxf8+ Kd7 3.Bf5+
- 17) 1.f6+ Kh8 2.g7+ Kg8 3.f7+ Kxg7 3.Qf6#
- 18) 1.Ne7+ Kf8 2.Ng6+ Kg8 3.Qf8+ Rxf8 4.Ne7#
- 19) 1.Nd7+ Kc8 2.Nb6+ Kb8 3.Qc8+
- 20) 1.Qxg5
- 21) 1.Qxe6 Rxe6 2.Rf8+ Kg7 3.R1f7+
- 22) 1.Re8+ Nxe8 2.Qxg6+
- 23) 1.Be6+ Kc7 2.Nxc8+ (or 2.Nc4+)
- 24) 1.Ne8 if 1...Kg6 2.Qf6+
- 25) 1...Rxc2+ 2.Kxc2 Qh3+ if 3.Kf2 Qh2+ or if 3.Kg1 Rg8+
- 26) 1...Rc1+ if 2.Kh2 Qxf4+
- 27) 1...Rd2
- 28) 1...e3+ if 2.Rf3 Bxf3+